



\$399
AIRFARE

WHEN BOOKED BY
12/31/2022

Christmas Time on the Rhine

Departure Date: November 27, 2023



Christmas Time on the Rhine



Stroll the beautiful Christmas market in Kaysersberg, France



Shop for unique treasures at the festive Christmas markets

DAY 1 Depart the USA: Depart the USA on your overnight flight to Frankfurt, Germany.

DAY 2 Frankfurt – Mainz, Germany: Welcome to Germany! Upon arrival, you will be met at the Frankfurt airport and transferred to your Emerald Cruises Star-Ship in Mainz. After boarding you'll have free time to become acquainted with the vessel, or time permitting, take a stroll in the city, in the heart of the Rhine wine region. Late this afternoon, the ship departs for the start of your river voyage. **Meal: D**

DAY 3 Rastatt: Disembark the ship in Rastatt and embark on a visit to the famous spa-town of Baden-Baden, surrounded by the mountains of the Black Forest. Walk through the this 'wellness town' with a local guide and visit the casino boasting architecture similar to the one in Monaco, and beautiful decor inspired by French royal palaces. Return to the ship for lunch followed by free time to explore the city of Rastatt on your own. Perhaps you'll do a self-guided walk along the 'historical route' of the city, passing 23 sites of historic and architectural importance. See palaces, churches, fountains, and former gates to the city. Alternatively, join the optional tour to the Baden-Baden Opera House. **Meals: B, L, D**

DiscoverMORE: Baden-Baden Opera House – behind the scenes (additional expense)

DAY 4 Kehl / Strasbourg, France: This morning's tour follows the 'Pottery Route', promising picturesque villages, spa towns and castles. Visit the little Alsatian village of Ribeauvillé, France, with a history of pottery artisans and Alsatian wines. Continue to Kaysersberg where you'll find a beautiful Christmas market. After some free time to shop, return to the ship for lunch. This afternoon, join the excursion to Strasbourg, capital of the Alsace region in France. A local guide leads you on a walking tour through this picturesque town. Stroll along the Grand Île and through the Old Quarter, 'La Petit France'. Admire the historical city center and UNESCO World Heritage Site known for its medieval black and white timber-framed buildings, old tanning houses, baroque sandstone buildings, canals and its centerpiece, the gothic cathedral. When decorated for Christmas, the atmosphere in Strasbourg is even more magical! Enjoy all its charms as you shop at the local Christmas market for your souvenir treasures and holiday gifts for yourself or others. **Meals: B, L, D**

DAY 5 Breisach, Germany: Entrenched between two countries, Breisach is also known as the gateway to Germany's Black Forest region. This afternoon, enjoy a scenic drive through the famed Black Forest Highlands on your way to the Hofgut Sternen complex. Located at the foothill of Ravenna Gorge, a place where history and tradition merge, it was here



Visit the postcard-perfect Christmas market beneath the Ravenna Viaduct

where Marie Antoinette stopped with 52 beautifully decorated carriages on the way to her wedding to King Louis XVI. As part of your EmeraldPLUS program, visit the postcard-worthy Christmas market situated underneath the 130-foot-high Ravenna Viaduct. Add the aroma of baked goods and homemade Black Forest specialties along with the displays of handcrafted items and the Christmas atmosphere is truly enchanting. **Meals: B, L, D**

EmeraldPLUS: Guided visit to the Christmas market at Ravenna Viaduct

EmeraldPLUS: Christmas concert onboard

DAY 6 Basel, Switzerland - USA: It's time to say farewell to the captain and crew as you disembark the vessel and transfer to the Zurich airport for your flight home. Flights are to depart Zurich after 12:00pm. Warm memories of your cruise along the Rhine and the local Christmas markets are sure to brighten the holiday season. **Meal: B**

Itinerary and vessel are subject to change.

CRUISE ACCOMMODATIONS

Days 2 through 5 – Aboard an Emerald Cruises Star-Ship



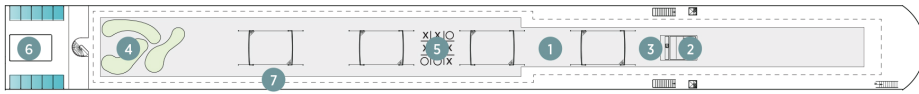
Exceptional Inclusions

- **11 meals:** 4 breakfasts, 3 lunches and 4 dinners
- **Airport transfers** on tour dates when air is provided by Mayflower Cruises & Tours
- **Four nights** in a suite or stateroom of your choice onboard the vessel
- Visit **three countries**
- Explore **charming Christmas** markets
- Included tours in ports of call
- First-class service by an English-speaking crew
- **Onboard Activity Manager** to support all EmeraldACTIVE excursions and host onboard daily wellness activities, games, classes, and evening entertainment
- **All gratuities included**
- **Shore excursions** with English-speaking local guides
- **Personal listening device** for shore excursions
- **All meals included** onboard
- Variety of **international cuisine**
- Complimentary **regional wines, beer and soft drinks** with onboard lunches and dinners
- Complimentary **bottled water** in your stateroom
- Complimentary **WiFi onboard**
- Complimentary **bicycles onboard** for use ashore
- **All port charges included**

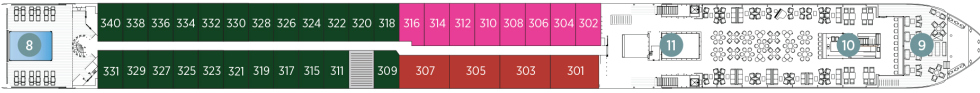
Emerald Cruises Star-Ships

Built: 2014-20 **Speed:** 15.5 mph **Staterooms:** 19 **Suites:** 72 **Length:** 443 ft. **Crew:** 47

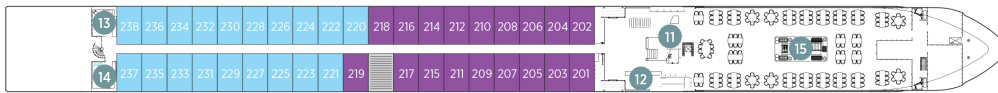
SUN DECK



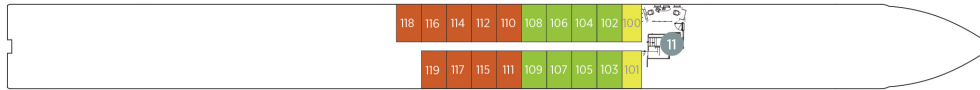
HORIZON DECK



VISTA DECK

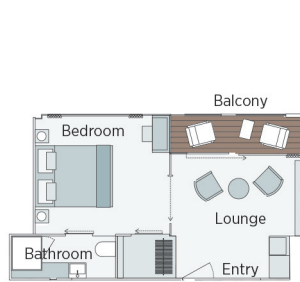


RIVIERA DECK



Public Areas and Ship Amenities

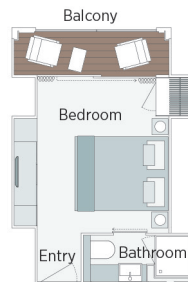
- 1 Sun Deck with Deck Chairs
- 2 Navigation Bridge
- 3 Sky Barbeque
- 4 Golf Putting Green
- 5 Games Area
- 6 Retractable Glass Roof
- 7 Walking Track
- 8 Daytime Pool & Evening Cinema
- 9 The Terrace
- 10 Horizon Bar and Lounge
- 11 Elevator
- 12 Reception
- 13 Wellness Area
- 14 Fitness Area
- 15 Reflections Restaurant



Owner's One-Bedroom Suite

315ft²

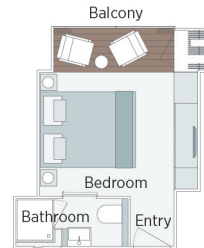
CAT SA



Grand Balcony Suite

210ft²

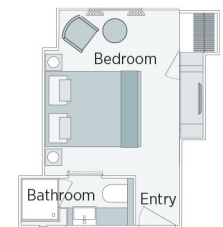
CAT S



Panorama Balcony Suite

180ft²

CAT A CAT B CAT C



Emerald Stateroom

162ft²

CAT D CAT E

2023 Departure Date
Christmas Time on the Rhine

		NOV 27	
CAT	STATEROOM / SUITE	DECK	
E	Emerald Stateroom	Riviera	PER PERSON TWIN: \$1,745; SINGLE ROOM ADD: +\$1,220
D	Emerald Stateroom	Riviera	PER PERSON TWIN: \$1,860; SINGLE ROOM ADD: +\$1,300
C	Panorama Balcony Suite	Vista	PER PERSON TWIN: \$2,145; SINGLE ROOM ADD: +\$1,500
B	Panorama Balcony Suite	Vista	PER PERSON TWIN: \$2,395; SINGLE ROOM ADD: +\$1,675
A	Panorama Balcony Suite	Horizon	PER PERSON TWIN: \$2,445; SINGLE ROOM ADD: +\$1,715
S	Grand Balcony Suite	Horizon	PER PERSON TWIN: \$2,745; SINGLE ROOM ADD: N/A
SA	Owner's One-Bedroom Suite	Horizon	PER PERSON TWIN: \$3,195; SINGLE ROOM ADD: N/A

\$399 AIRFARE PER PERSON WHEN RESERVATIONS ARE MADE BY DECEMBER 31, 2022

Air schedules from your gateway city to Frankfurt, Germany, returning from Zurich, Switzerland will be available closer to departure.

Air itineraries may not be available until documents are received. Air seats are assigned by the airline for the entire group. Seat changes can only be attempted upon receipt of tickets and documents at which time availability may be limited. If specific seat assignments are vital to your reservation, we recommend individual air reservations rather than booking air with the group.

Travelers Protection Plan (TPP) for River Cruises - \$499 per person (optional)

This nonrefundable fee will provide a refund to you during the instance that you have to cancel your trip. The cancellation has to be for a covered reason (see Plan for details on coverage) and we have to be notified at least one day prior to departure. If you must leave the tour early due to personal illness or the illness or death of an immediate family member, TPP will provide a refund for any unused services after the departure of the tour. Other benefits include medical expenses for illness and injury, emergency transportation, 24 hour hot line and lost or stolen baggage assistance. Return air transportation is included ONLY if your air tickets are purchased through Mayflower Cruises & Tours. Please review the Plan for details on coverage. Should you choose not to purchase our TPP, the following per person cancellation charges will be assessed for all tours and optional excursion costs:

- 91 days or more prior to departure: Deposit Amount
- 90 days to day of departure: 100% of total tour
- No refund on unused portions of the tour

TOUR ACTIVITY LEVEL
1 2 3 4 5
EASY ENERGETIC



Exclusions: Mayflower Cruises & Tours reserves the right to alter its Refund and Cancellation Policy when a substantial amount of cancellation or postponement of travel is attributable to: conditions resulting from an act of God, natural or man-made disaster, fire, government action, civil disorder, war, hostilities between nations, or unavailability of transportation through no fault of Mayflower Cruises & Tours. Plan and benefits offered and administered by Trip Mate, Inc.



FOR RESERVATIONS OR INFORMATION CONTACT:

Carlson Maritime Travel
Judy Urso

727-462-5233

judy@scarlsonstvl.com

www.scarlsonstvl.com